
Company Introduction

www.edehege.co.th



Company Profile

www.edehege.co.th

Edehege (Thailand) Co., Ltd.



998/7 Moo 21, Bangpleeyai , Bangplee, Samutprakarn, 10540 Thailand.

Tel : (66) 2103-3263 Fax : (66) 2103-3264

Located 23km south of Suvarnabhumi Airport; 36km east of Asoke BTS station.

Thai local registered company shareholding : 51% (Thai) + 49% (Foreign)

- | | | | |
|----------------------|--|--------------------|-----------|
| Factory area | : >1,200sqm | Office area | : >200sqm |
| Facilities | : Office, Showroom, Conference rooms, Warehouse, Production, Cleanrooms, QC Test Lab, QA/QMR standards, Canteen etc. | | |
| No. Employees | : 20 ~ 40 (3 foreigners in management) | | |



Vision & Core Values

VISION

To be the market leader in providing **innovative and functional solutions** for applications in the packaging and manufacturing industries.

MISSION Statement

To enhance the **operational efficiencies** for our customers and partners.

CORE VALUES

Integrity

Innovation

Consistent Quality

Customer-centric



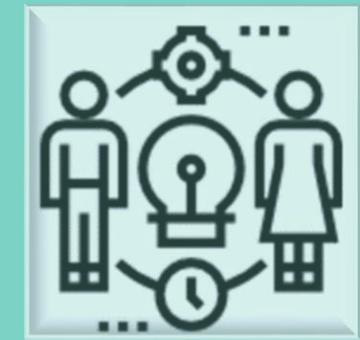
OUR COMMITMENT



**TO PROVIDE TOTAL SOLUTIONS IN THE
PRECISION CONVERTING & SUB-ASSEMBLY
INDUSTRY SECTORS.**



**TO SPECIALIZED IN MATERIAL & AUTOMATION
CREATIONS, SOURCING NETWORK, PARTS
CONVERTING, APPLICATIONS' TREND AND
SALES MANAGEMENT.**



**TO KEEP ON EVOLVING OUR BUSINESS WITH
THE CONVENIENCE OF OUR CLIENTS AT MIND.**

Edehege Group of Companies



Singapore

Edehege Adhesive Products Pte Ltd

Since 2000

Woodlands Ave 12

Head Quarter

Warehouse – Slitting – QA/QC

ISO 9001:2015



Thailand

Edehege (Thailand) Co., Ltd.

Since 2017

Bangpleeyai – Samutprakarn

Factory Site 1

Warehouse – Slitting – Precision Diecut –
QA/QC – Sub-assembly

ISO 9001:2015



China

Wuxi Edehege Bond Materials Co., Ltd.

Since 2002

Wuxi - Jiangsu

Factory

Coating - Warehouse – Slitting – R&D – QA/QC

ISO 9001:2015

Edehege Partners

Factory Site 2



Singapore

Process Innovation Technology S.E. Asia Pte Ltd

Since 2000

Kallang Pudding

Factory

Diecut (Small to large Press, Rotary, CNC Oscillating, etc.) –

Materials (Tapes, Foams, Felts, Fabrics, Films etc.)

ISO 14001:2015

ISO 9001:2015

<https://process.com.sg/>

Factory Site 3



Singapore

Honsen Pte Ltd

Since 1995

Changi South

Printings (Colour Digital, Silkscreen, Flexo, Laser, Security Labels)

Diecut (Small to large Press, Rotary, CNC Oscillating, etc.)

Materials (Labelstock, Tapes, Films, Decals, Nameplates etc.)

ISO 13485

IATF 16949

ISO 14001:2015

ISO 9001:2015

<https://honsengroup.com/>



Your Total Solutions Provider

Fast Response

Supportive Service

Resourceful

Precision Converted Parts



- Small form Factor
- High Precision
- Multi-layered Process
- Roll form for auto-assembly
- Clean environment
- Prototyping build
- R&D Test Support

General Converted Parts



- Medium to Large Form Factor
- General Precision
- Laminated
- Bending Profile
- Sub-assembly
- Expertise in :
 - Cushioning
 - Filtering
 - Absorbing
 - Dampening
 - Gap Sealing

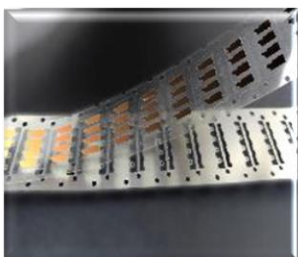
Printed Parts



- Labels
- Decals
- Overlays
- Displays
- Nameplates
- Emblems
- Security Seals
- Clean environment
- Secured Premises

Our Cost-saving Solutions; Your Total Solutions Provider

Cost Saving Solutions - Diecut Process Design



- Die tools are designed with Quality & Efficiency concerns in mind
- Reducing material & labour costs wastage
 - Lower in-process NG rate
- Multiple sources of capabilities available (In-house/ Outsource)
- Continuous improvements for achieving more "Value for Money" benefits.

Cost Saving Solutions - Production Process



- Roll form process yields higher efficiency
 - Roll to Roll; Roll to Sheet; Roll to Piece.
 - High-speed flat bed diecut
 - Multi-stage diecut
 - MATSAVE (Jump cut)
 - Full-rotary diecut
 - Auto-deflashing & lamination
 - Narrow strips converting
- Fast prototype production for printing and die-cutting
- Lower material wastage; Lower NG rate.

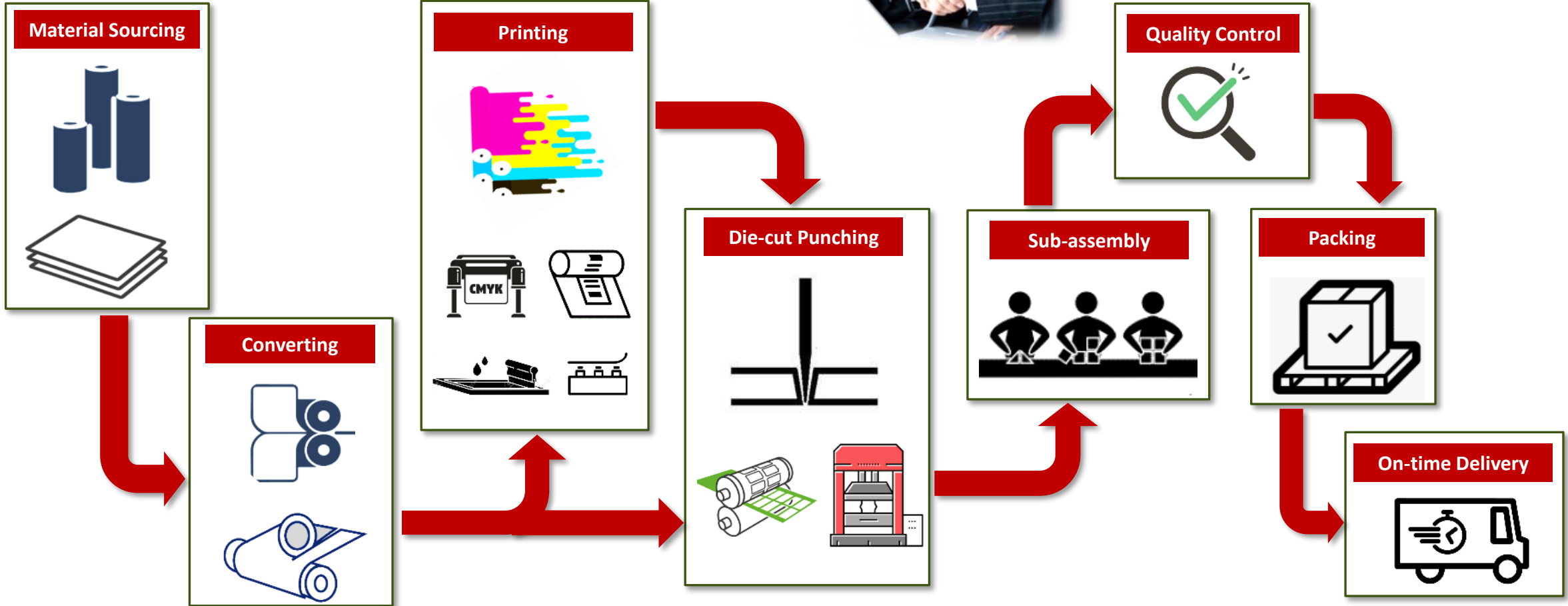
Cost Saving Solutions - Materials



- ADH – Film & Paper Release Liners
- ADH – Multipurpose In-process Tapes
 - Carrier, Pick Up (Slug Puller)
 - Protection Tapes
- ADH - FR V-0 grade Tapes & Films
- ADH - Economical grade DS Tapes
- ADH - Low VOC & Low Outgassing Tapes
- Thermal Interface Materials (TIM)
- EMI/RFI Shielding Materials & Tapes
- Specialty Films, Tapes & Label Materials
 - Avery Dennison, Dexerials, Tesa, 3M, Lintec, Flexcon, Sekisui, Okamoto, S-mesh, Chukoh, Sabic, ...

Our Expertise Is Your Demand

More than 20 years of experience & skill sets



Capabilities

Site 1 Thailand

Edehege (Thailand) Co Ltd



Rewind Slitting

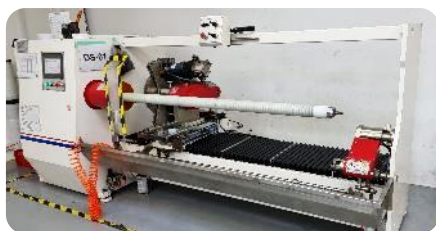


1300mm – Dust-free



1600mm Servo Driven –
Silicone-free

Tape Cutting



1600mm - Auto



1300mm – Semi-auto

Laminating



550mm

MATSAVE Die-cut



300x300mm High-speed



Material Saving
Feature

Tensile Test



Peel Force Tester

Multi-stage Laminating

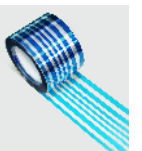


250mm – 2-stage

Rotary Narrow Slitting



350mm Servo Driven – Laminating/Slitting/Rotary
DC/Gap Spacing/Sheet Cutting/Die-cut



Capabilities

Site 2 Singapore - Kallang



Roll-To- Roll or Roll-To-Sheet



3-stage Laminator



Micro Computer Precision Die-cut



Rotary Die-cut



Jump Cutting Die-cut

Sheet-To-Sheet



Sheet Laminator



Micro Computer XY cutter



35T Power Press with Auto Feeder

Large Format



150T Power Press



1300mm Hydraulic Press

Sample Run & Measurement



1100x1300 CNC Oscillating Cutter



KEYENCE
Image Dimension Measuring
Machine



OPUS
Dimensional Measurement Machine

Capabilities

Site 3 Singapore – Changi South



Digital Printing



Graphtec 1600mm



Indigo WS6800



Indigo WS600

Flexo Printing



Bobst M5

Letterpress Printing



Lintec LPM 300 iTP

Silkscreen Printing



Shiki Colour Silkscreen



AT-80PD Semi-auto Silkscreen



ATMAOE MF44 Auto Silkscreen

Rotary Die-cut



Rotoflex – Rotary Die-cut



Digicon – Flexo Die-cut

Flat-bed Die-cut



PC300 Flat bed Die-cut

RFID Insertion



RFID Insertion Machine



Solutions For Die-cut Converting Parts

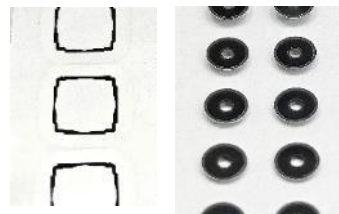
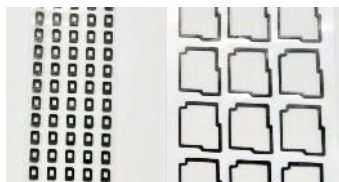
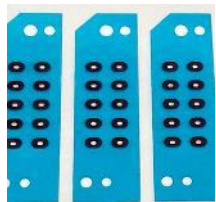
Site 1

Small Form Factor

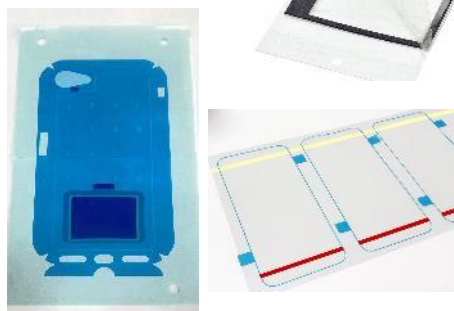
Narrow Tolerance

Multi-layered

Precision Parts



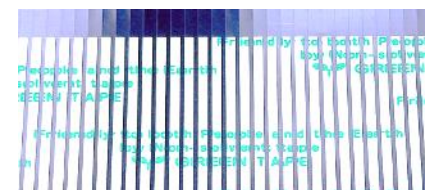
Portable Displays



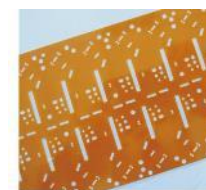
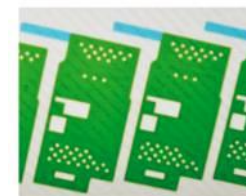
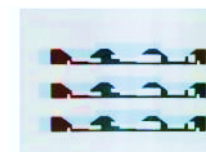
Acoustic Mesh



Tape Bonding



Die-cuts For FPC





Solutions For Die-cut Converting Parts

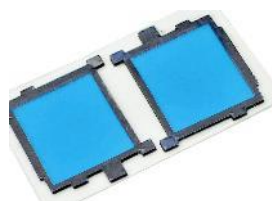
Site 1

Small Form Factor

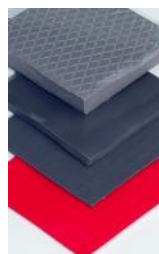
Narrow Tolerance

Multi-layered

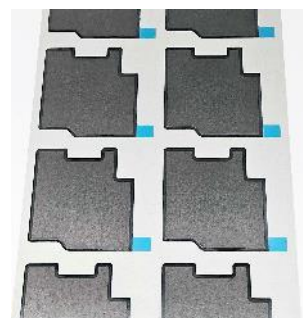
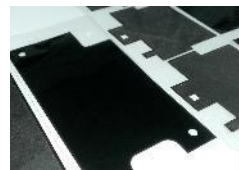
Seals/Gaskets



Thermal Interface



Thermal Absorber



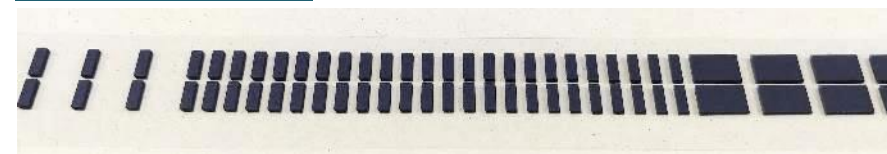
EMI Shielding



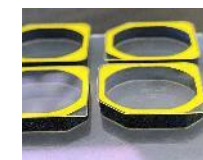
Automotive Electronics



Cushions/Dampers



CCD Protectors



Solutions For Die-cut Converting Parts

Site 2

Large Form Factor General Tolerance High Volume

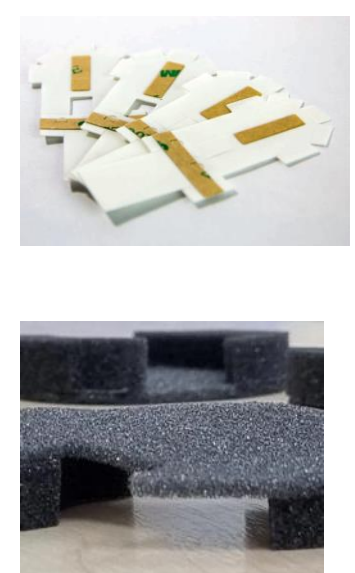
Full Cut



Half Cut / Kiss Cut



Sub-assembly

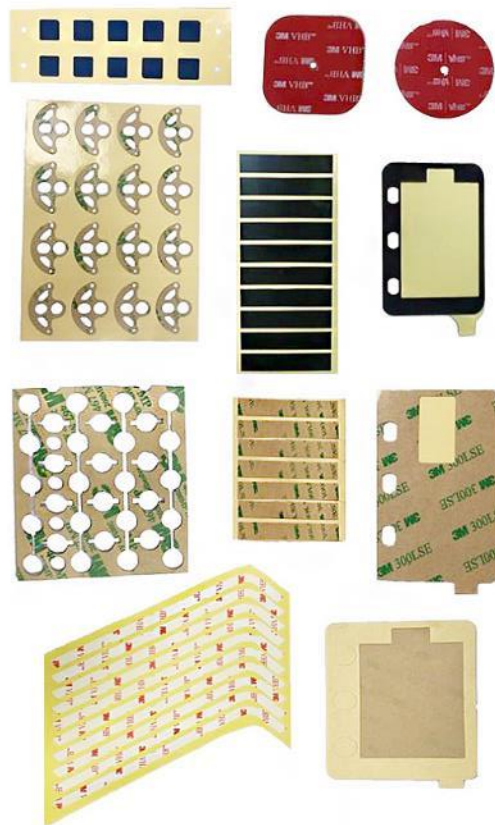


Solutions For Die-cut Converting Parts

Site 2

Large Form Factor General Tolerance High Volume

Tape Bonding



Elec. Insulating



Solutions For Printed Parts & Emblems

Site 3

Silkscreen Roll & Sheet High Resolution

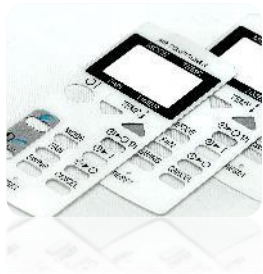
Surface Protection



Nameplates



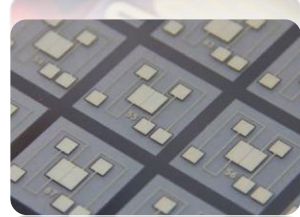
Displays



Calibration



Heating Pads



Electroluminescent Panels



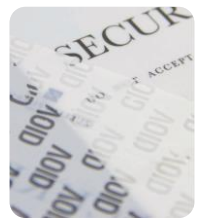
PU Domes



Solutions For Printed Labels Site 3

Digital Flexo Letterpress Thermal Transfer Roll & Sheet High Resolution

Security



Temper Evident Labels



Micro Text Labels



Trust Seals



Holographic Labels



Scratch-off Labels

Electronics



ESD Grade Labels



High Temperature Labels

RFID



Product



Multi-layer Labels



Booklet Labels



Product Labels

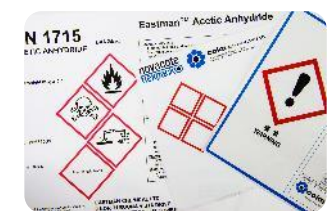


Decals



Fabric Labels

Warning



GHS Labels



Warning Labels